



Subject : FONTE MARGHERITA 1845 SRL SUSTAINABLE PROCESS

Fonte Margherita 1845 Srl is a company who bottles mineral water in glass with returning bottles.

Our packages are reused on average more than 10 times.

Sustainability is a pillar in our mission and in the way we operate day by day and in our bottling and washing process we use the most advance and sustainable techniques/products supplied by our technical partner ECOLAB (<https://it-it.ecolab.com/>)

Torrebelvicino, 20/09/2022

FONTE MARGHERITA 1845 SRL
Legale Rappresentante *Moro Denis*

FONTE MARGHERITA 1845 SRL
VIA FONTE MARGHERITA, 9-36036 TORREBELVICINO (VI)

FORTE MARGHERITA 1845 SRL

VIA FORTE MARGHERITA, 9
 36036 TORREBELVICINO (VI)
 P.IVA/CF 04119680249 TEL.0445/660110

**FORTE MARGHERITA SPARKLING 27,5 CL**

Description: Natural mineral water from Camonda Springs in the Piccole Dolomiti Mountain. Oligominerale with total dissolved solids between 50 mg/L and 500 mg/L bottled in a personalized glass bottle, that maintains all the characteristics of the water. **Natural mineral water with carbon dioxide added.**

WATER ANALYSIS 26/06/2018 – UNIVERSITA’ DEGLI STUDI DI PADOVA

Parameter	Value	Unit of measurement
Water temperature at source	17,1	°C
pH water at source	7,6	
Conductivity at 20°C	617	µS/cm
Total Dissolved Solids dried at 180°C	433	mg/L
Sodium	1,2	mg/L
Potassium	1,0	mg/L
Magnesium	31	mg/L
Calcium	83	mg/L
Nitrate	3,2	mg/L
Bicarbonate	231	mg/L
Chloride	0,7	mg/L
Sulphate	179	mg/L
Fluoride	0,05	mg/L
Silica	5,5	mg/L
Nitrite	< 0,01	mg/L
Ammonium ion	< 0,01	mg/L

Labelling characteristics

Shelf life: 24 months from the day of production

T.M.C./ Lot number: shown on the package

Conservation mode: store in a clean, cool, dry and odorless place, away from direct sunlight

Logistics parameters

Primary package: container 275 ml in glass bottle with TALOG plug. Package dimensions: diameter: 5,7 cm and height: 21,5 cm

Secondary package: containing 24 bottles.

Secondary package dimensions: 40 cm (length) *29,5 cm (width) * 25 cm (height)

Secondary package weight: 16 kg ca

Palletization: 66 cartons (8 case/layer * 6 layers) – plt weight: 768 kg ca – plt height 175 cm, epal 80x120

Product code	Bottle EAN Code	Carton EAN Code
FM027F		

Producer	Fonte Margherita 1845 S.r.l. – Torrebelvicino (VI) Italy
-----------------	--

Compliance: Reg.CE 852 -853/2004 -178/2002 – 10/2011, D.L. 193/2007 - L.88/2009 – Reg.UE 1169/2011 – Dlgs 176/2011

FORTE MARGHERITA 1845 S.R.L.

VIA FORTE MARGHERITA, 9
 36036 TORREBELVICINO (VI)
 P.IVA/CF: 04119680249
 TEL. 0445/660110

FRONTE MARGHERITA 1845 SRL

VIA FRONTE MARGHERITA, 9
 36036 TORREBELVICINO (VI)
 P.IVA/CF 04119680249 TEL.0445/660110

**FRONTE MARGHERITA NATURALMENTE STILL 27,5 CL**

Description: Natural mineral water from Camonda Springs in the Piccole Dolomiti Mountain. Oligominerale with total dissolved solids between 50 mg/L and 500 mg/L bottled in a personalized glass bottle, that maintains all the characteristics of the water.

WATER ANALYSIS 26/06/2018 – UNIVERSITA’ DEGLI STUDI DI PADOVA

Parameter	Value	Unit of measurement
Water temperature at source	17,1	°C
pH water at source	7,6	
Conductivity at 20°C	617	µS/cm
Total Dissolved Solids dried at 180°C	433	mg/L
Sodium	1,2	mg/L
Potassium	1,0	mg/L
Magnesium	31	mg/L
Calcium	83	mg/L
Nitrate	3,2	mg/L
Bicarbonate	231	mg/L
Chloride	0,7	mg/L
Sulphate	179	mg/L
Fluoride	0,05	mg/L
Silica	5,5	mg/L
Nitrite	< 0,01	mg/L
Ammonium ion	< 0,01	mg/L

Labelling characteristics

Shelf life: 24 months from the day of production

T.M.C./ Lot number: shown on the package

Conservation mode: store in a clean, cool, dry and odorless place, away from direct sunlight

Logistics parameters

Primary package: container 275 ml in glass bottle with TALOG plug. Package dimensions: diameter: 5,7 cm and height: 21,5 cm

Secondary package: containing 24 bottles.

Secondary package dimensions: 40 cm (length) *29,5 cm (width) * 25 cm (height)

Secondary package weight: 16 kg ca

Palletization: 66 cartons (8 case/layer * 6 layers) – plt weight: 768 kg ca – plt height 175 cm, epal 80x120

Product code	Bottle EAN Code	Carton EAN Code
FM027N		

Producer	Fonte Margherita 1845 S.r.l. – Torrebelvicino (VI) Italy
-----------------	--

Compliance: Reg.CE 852 -853/2004 -178/2002 – 10/2011, D.L. 193/2007 - L.88/2009 – Reg.UE 1169/2011 – Dlgs 176/2011

FRONTE MARGHERITA 1845 S.R.L.

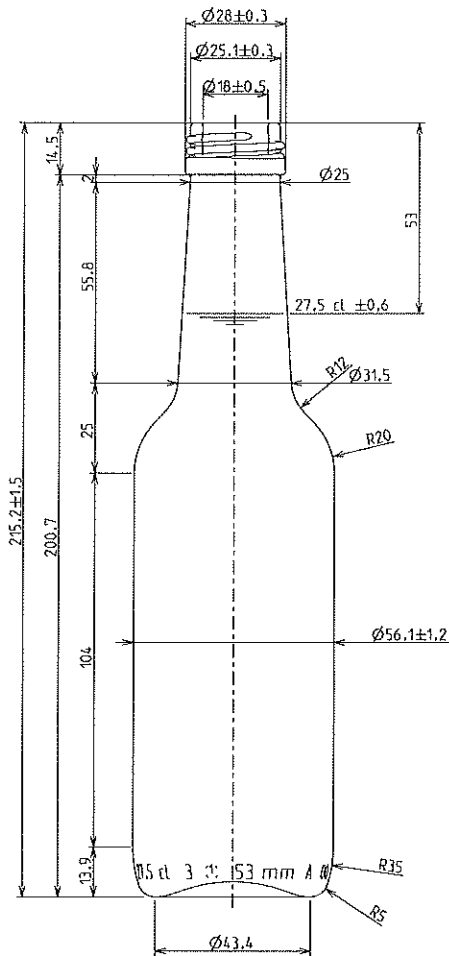
VIA FRONTE MARGHERITA, 9
 36036 TORREBELVICINO (VI)
 P.IVA/CF: 04119680249
 TEL. 0445/660110

CP20226-001 | 10/10/18

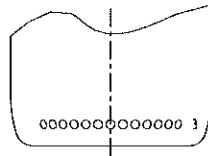
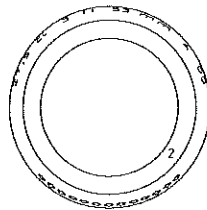
VISTO PER APPROVAZIONE

DATA _____

Questo disegno è di proprietà di VERALLIA ITALIA S.p.A. / This drawing is property of VERALLIA ITALIA S.p.A. - Documento Confidenziale / Confidential Document



1	MARCHIO DI FABBRICA TRADE MARK
A	CONTRASSEGNO TIPO VETRO GLASS TYPE
00	NUMERO STAMPO CAVITY NUMBER
2	ZIGORNATURA REURING
3	PUNTI LETTORE CAVITA' DOTS CODE
4	CODICE ALFANUMERICO NUMERIC CODE
5	COORDINATA A DISCREZIONE DELLA VERALLIA STIPPLING AT THE DISCRETION OF THE GLASS MILLER
	CONTROLLO STATISTICO STATISTICAL CONTROL



R.V.	DATA	NC	DESCRIZIONE MODIFICA - MODIFICATION DESCRIPTION	FORMAT
				A3

CARATTERISTICHE E LIMITI DI UTILIZZO

PRODOTTO
BIBITA GASSATA
Pastorizzato : SI
Sterilizzato : NO

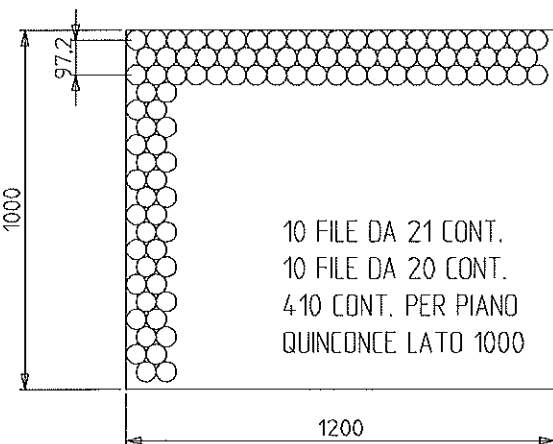
Salto termico max (°C) : 55
Pressione picco (bar) : 8
Pressione continuativa (bar) : 5
Carico assiale max (Kg) : 300

TOLLERANZE
Parallelismo bocca (mm) : 0,6
Verticalita' (mm) : ±2,5
Foro min. passante (mm) : 16

TRATTAMENTI SUPERFICIALI
a caldo : SI, ESCLUSO BOCCA
a freddo : SI

VISTO PER APPROVAZIONE _____ DATA _____
IL CONTENITORE E' REALIZZATO CON VETRO DI TIPO A, CONFORME ALLA DISCIPLINA IGIENICA DEGLI IMBALLAGGI DEL D.M. 21 MARZO 1973 E SUCCESSIVE MODIFICAZIONI. E' PERTANTO IDONEO AL CONFEZIONAMENTO DI OGNI ALIMENTO IN QUALSIASI CONDIZIONE DI CONTATTO

SCHEMA DI PALLETTIZZAZIONE



1178 x 979

Piani 5
Contenitori 2050
Peso (Kg) 420

Pianale STANDARD LEGNO
Sul pianale FOGLIO
Tra i piani INTERFALDA POLI
Sottocop. INTERFALDA POLI
Coperchio CARTONE ONDU
Film TUBOLARE POLI
Top Pal SI

	ARTICOLO ARTICLE	TROPICAL 18 29.3-AL28	PROGETTISTA DRAWING BY	A. Dogliotti	CAPAC. RB (cl) BRIMFULL CAPACITY	29,3	
	BOCCA FINISH	UNI 7564 - 28 bassa	DATA DATE	27/09/18	PESO (gr) GLASS WEIGHT	190	
	CLIENTE CUSTOMER	VARI	ANGOLO DI CADUTA STABILITY	15,8°	APPROVATO DA APPROVED BY	A. Bocchio	
	DIAMETRO MIN. FORO PASSANTE MINIMUM INTERNAL DIAMETER	16	TOLLERANZA VERTICALITA' VERTICALITY TOLERANCE	± 2,5	SCALA SCALE	1:1	STUDIO CODE STUDY
					R.V.	A.2	