

# FICHE TECHNIQUE TAO BOTANIC BLACKCURRANT

## CONSUMER UNIT

TYPE	CAN
MATERIAL	ALUMINIUM
CONSUMER UNIT	250 ML
DIMENSIONS	Ø 50 MM X 133 MM
GROSS WEIGHT	269 G
NET WEIGHT	250 G
EAN BARCODE	5400514 440005
CUSTOM CODE	22021000

## 4-PACK

TYPE	PACK (FOIL)
UNIT SIZE	4 X 250 ML
DIMENSIONS	105 X 105 X 135 MM
GROSS WEIGHT	1.094 KG
EAN BARCODE	5400514 440012

## TRAY

ORDER CODE	118411
CONTENTS	24 X 250 ML
DIMENSIONS L X W X H (MM)	330 X 220 X 135 MM
GROSS WEIGHT	6,60 KG
NET WEIGHT	6 KG
EAN BARCODE	5400514 440029

## EU CHEP PALLET

DIMENSIONS L X W X H	80 CM X 120 CM X 125 CM
WEIGHT/PALLET	662 KG
WEIGHT EMPTY PALLET	31 KG
NO. OF LAYERS	8
NO. OF TRAYS PER LAYERS	12
TOTAL TRAYS/PALLET	96
NO OF UNITS/PALLET	2.304 CANS
EAN BARCODE	5400514 440036

## PRODUCTION DETAILS

COUNTRY OF ORIGIN	GERMANY
SELL-BY DATE	15 MONTHS FROM DATE OF PRODUCTION
TRANSPORT & STORAGE TEMPERATURE	AMBIENT



  
BELGIUM CRAFTED QUALITY

NATURALLY SLOW SUGARS • LOW CALORIE • VITAMINS

**tao**<sup>®</sup>  
BOTANIC

TAO Family S.A. - N.V.

Industrielaan 16-20 | 1740 Ternat | Belgium | Tel. +32 2 583 50 00 | [www.myhealthychoice.be](http://www.myhealthychoice.be)

# FICHE TECHNIQUE TAO BOTANIC BLACKCURRANT



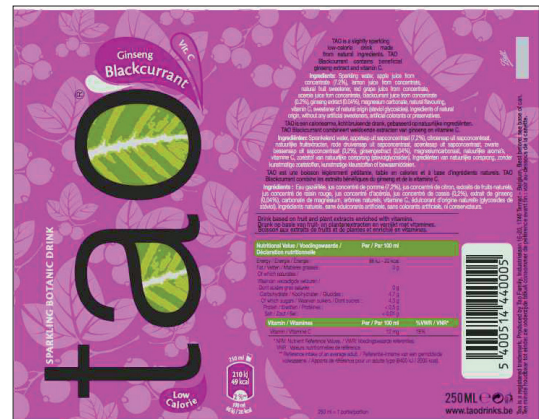
<b>DESCRIPTION</b>	Drink based on fruit and plant extracts enriched with vitamins.
<b>INGREDIENTS</b>	Sparkling water, apple juice from concentrate (7.2%), lemon juice from concentrate, natural fruit sweetener, red grape juice from concentrate, acerola juice from concentrate, black currant juice from concentrate (0.2%), ginseng extract (0.04%), magnesium carbonate, natural flavouring, vitamin C, sweetener of natural origin (steviol glycosides).

## ALLERGENS

CONTAIN GLUTEN	NO
VEGAN	YES
VEGETARIAN	YES
ORGANIC	NO
KOSHER	NO
HALAL	NO
LACTOSE FREE	YES

## NUTRITION DECLARATION

	AVERAGE PER 100 ML
ENERGY VALUE (KJ)	86 KJ
ENERGY VALUE (KCAL)	20 KCAL
FAT	0 G
OF WHICH SATURATES	0 G
CARBOHYDRATE	4,7 G
OF WHICH SUGARS	4,3 G
FIBRE	0 G
PROTEIN	< 0,5 G
SALT	< 0,01 G
SODIUM	0 G



**BELGIUM CRAFTED QUALITY**

NATURALLY SLOW SUGARS • LOW CALORIE • VITAMINS

**tao**  
BOTANIC

TAO Family S.A. - N.V.

Industrielaan 16-20 | 1740 Ternat | Belgium | Tel. +32 2 583 50 00 | [www.myhealthychoice.be](http://www.myhealthychoice.be)