

FICHE TECHNIQUE TAO BOTANIC GREEN TEA

CONSUMER UNIT

TYPE	CAN
MATERIAL	ALUMINIUM
CONSUMER UNIT	250 ML
DIMENSIONS	Ø 50 MM X 133 MM
GROSS WEIGHT	269 G
NET WEIGHT	250 G
EAN BARCODE	5400514 410008
CUSTOM CODE	22021000

4-PACK

TYPE	PACK (FOIL)
UNIT SIZE	4 X 250 ML
DIMENSIONS	105 X 105 X 135 MM
GROSS WEIGHT	1.094 KG
EAN BARCODE	5400514 410015

TRAY

ORDER CODE	118411
CONTENTS	24 X 250 ML
DIMENSIONS L X W X H (MM)	330 X 220 X 135 MM
GROSS WEIGHT	6,60 KG
NET WEIGHT	6 KG
EAN BARCODE	5400514 410022

EU CHEP PALLET

DIMENSIONS L X W X H	80 CM X 120 CM X 125 CM
WEIGHT/PALLET	662 KG
WEIGHT EMPTY PALLET	31 KG
NO. OF LAYERS	8
NO. OF TRAYS PER LAYERS	12
TOTAL TRAYS/PALLET	96
NO OF UNITS/PALLET	2.304 CANS
EAN BARCODE	5400514 410039

PRODUCTION DETAILS

COUNTRY OF ORIGIN	GERMANY
SELL-BY DATE	15 MONTHS FROM DATE OF PRODUCTION
TRANSPORT & STORAGE TEMPERATURE	AMBIENT



 **BELGIUM CRAFTED QUALITY**

NATURALLY SLOW SUGARS • LOW CALORIE • VITAMINS

tao[®]
BOTANIC

TAO Family S.A. - N.V.

Industrielaan 16-20 | 1740 Ternat | Belgium | Tel. +32 2 583 50 00 | www.myhealthychoice.be

FICHE TECHNIQUE TAO BOTANIC GREEN TEA



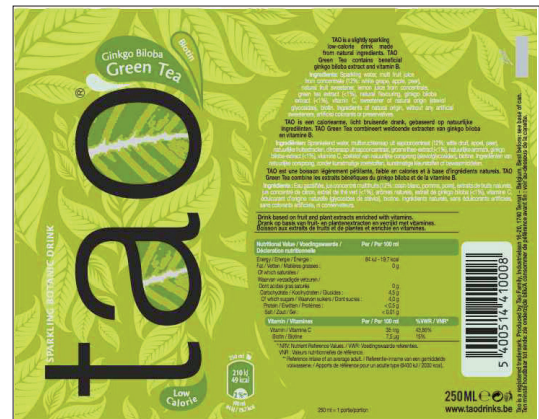
DESCRIPTION	Drink based on fruit and plant extracts enriched with vitamins.
INGREDIENTS	Sparkling water, multi fruitjuice from concentrate (12%: white grape, apple, pear), natural fruit sweetener, lemon juice from concentrate, green tea extract (<1%), natural flavouring, ginkgo biloba extract (<1%), vitamin C, sweetener of natural origin (steviol glycosides), biotin.

ALLERGENS

CONTAIN GLUTEN	NO
VEGAN	YES
VEGETARIAN	YES
ORGANIC	NO
KOSHER	NO
HALAL	NO
LACTOSE FREE	YES

NUTRITION DECLARATION

	AVERAGE PER 100 ML
ENERGY VALUE (KJ)	84 KJ
ENERGY VALUE (KCAL)	19,7 KCAL
FAT	0 G
OF WHICH SATURATES	0 G
CARBOHYDRATE	4,5 G
OF WHICH SUGARS	4,0 G
FIBRE	0 G
PROTEIN	< 0,5 G
SALT	< 0,01 G
SODIUM	0 G



BELGIUM CRAFTED QUALITY

NATURALLY SLOW SUGARS • LOW CALORIE • VITAMINS

tao
BOTANIC

TAO Family S.A. - N.V.

Industrielaan 16-20 | 1740 Ternat | Belgium | Tel. +32 2 583 50 00 | www.myhealthychoice.be